

We are fully committed to providing you with the most **Energy Efficient Solutions**

# NBB

The BoosterBox system is a new smart solution to the problem of low water pressure in domestic applications.

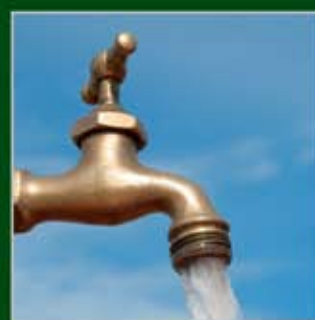
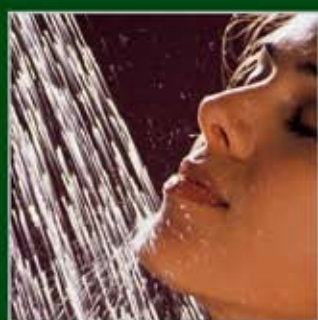
## MAIN FEATURES:

- WRAS approved 280 litre tank
- A submersible or surface mounted pump
- Low noise output
- Fixed speed or energy efficient variable speed
- Optional tank extension kit

NBB offers high performance with simple installation and operation.



## APPLICATIONS



# BOOSTERBOX

IMPIANTO DI PRESSURIZZAZIONE E RISERVA  
A VELOCITÀ FISSA O VARIABILE

**FIXED OR VARIABLE SPEED BOOSTER  
AND WATER STORAGE SYSTEM**



## DATI GENERALI

Il sistema di pressurizzazione NBB è composto da un serbatoio di accumulo acqua e da una pompa. Il concetto su cui si basa NBB è la modularità, che permette, partendo da un serbatoio di 280 l, di selezionare tra una pompa sommersa o di superficie che possono essere controllate da un variatore di frequenza Active Driver qualora richiesto da esigenze di installazione. Grazie ad una gamma completa, NBB offre elevate prestazioni che, unite alla semplicità di installazione, alle dimensioni ridotte e alla straordinaria silenziosità di tutte le versioni, lo collocano nel segmento più alto fra gli impianti domestici di pressurizzazione. In tutte le sue molteplici configurazioni si contraddistingue per la sua grande comodità, e nelle versioni con variatore di velocità, anche per il notevole contributo in materia di risparmio energetico. NBB è costituito da un serbatoio azzurro di 280 litri, specifico per acqua potabile, con galleggiante e troppopieno, in conformità con le norme europee EN1717 e EN13077. E' possibile anche unire al serbatoio ausiliario un altro serbatoio, in modo da raddoppiarne la capacità. Oltre ad NBB, l'utente dovrà scegliere il kit di montaggio corrispondente al tipo di pompa da utilizzare. Le pompe da installare non sono incluse nel kit e devono essere richieste separatamente. Kit Active per NBB - accessori necessari per installare la pompa Active System El nell'NBB: Kit Euroinox per NBB - accessori necessari per installare la pompa Euroinox con variatore AD nell'NBB (include piccolo vaso di espansione da 5 litri). Kit Divertron per NBB - accessori necessari per installare la pompa Divertron nell'NBB. Kit serbatoio ausiliario per NBB - accessori necessari per installare un serbatoio ausiliario nell'NBB.

## GENERAL DATA

*The NBB booster system is composed of a water storage tank and a pump. Model NBB is based on the concept of modularity, so that starting from a 280 l tank the customer can choose between a submerged pump and a surface pump that can be driven by an Active Driver inverter if so required by the application conditions. Thanks to the comprehensive range, the NBB offers performance levels that, when combined with the ease of installation, compact dimensions and exceptionally quiet operation of all the versions, position it at the high end of domestic booster systems. In all its multiple configurations the system is distinguished by its practicality, and in the version with variable speed drive, also by its ability to provide savings in power costs. NBB is composed of a light blue 280 litre tank specifically designed to hold drinking water, with float and overflow, in compliance with European standards EN1717 and EN13077. It is also possible to combine another tank to the auxiliary tank in such a way as to double the capacity. In addition to the NBB the user must order the assembly kit corresponding to the type of pump to be installed. The pumps to be installed are not included in the kit and must be ordered separately. Active kit for NBB - accessory required to install the El Active System pump in the NBB system.*

*Euroinox kit for NBB - accessory required to install the Euroinox pump with AD speed variator in NBB system (includes 5 litre expansion vessel). Divertron kit for NBB - accessory required to install the Divertron pump in NBB system. Auxiliary tank kit for NBB - accessories required to install an auxiliary tank in the NBB system.*

## SUPERFICIE / SURFACE



## SOMMERSO / SUBMERGED

## MODELLI / MODELS

MODELLO	MODEL	CODICE / CODE
NBB SERBATOIO DA 280 LITRI	NBB 280 L TANK	60123138
KIT ACTIVE PER NBB	KIT ACTIVE FOR NBB	60116646
KIT EUROINOX PER NBB	KIT EUROINOX FOR NBB	60123882
KIT PULSAR PER NBB	KIT PULSAR FOR NBB	60116638
KIT DIVERTRON PER NBB	KIT DIVERTRON FOR NBB	60123662
KIT PER AGGIUNTA SERBATOIO AUSILIARIO	FIXED OR VARIABLE SPEED BOOSTER AND WATER STORAGE SYSTEM	60123556
KIT GRIGLIE NBB	NBB SCREEN KIT	60140417

---

**ISTRUZIONI PER L'INSTALLAZIONE E LA MANUTENZIONE**  
**INSTRUCTIONS FOR INSTALLATION AND MAINTENANCE**  
**INSTALLATIONSANWEISUNG UND WARTUNG**  
**INSTRUCCIONES PARA LA INSTALACION Y EL MANTENIMIENTO**

**NEW BOOSTER BOX (NBB)**



**Summary**

	<b>Pag.</b>
<b>1. Safety</b>	<b>8</b>
1.1 Basic advise on safety and manage prevention	8
1.2 Preliminary inspection	8
<b>2. General overview</b>	<b>8</b>
2.1 Introduction	8
2.2 Technical features	9
2.3 Main components	10
<b>3. Installation</b>	<b>11</b>
3.1 Hydraulic installation	11
<b>4. Start up and operation</b>	<b>11</b>
<b>5. Repair and maintenance</b>	<b>11</b>
5.1 Maintenance	11
<b>6. Possible problem, causes and solution</b>	<b>11</b>
<b>7. Transport and storage</b>	<b>11</b>
<b>8. Disposal</b>	<b>11</b>
<b>9. Dimension and weight</b>	<b>12</b>



## 1. Safety

### 1.1 Basic advise on safety and manage prevention.

Where you find this symbol, please, make attention to:



**DANGER** → Risk of injury in the event of non-compliance with this specification.

**DAMAGE** → Risk of damage to the equipment or the installation in the event of non-compliance with this specification.



**DO NOT MANIPULATE OR REPAIR** → Manipulations or repair must only be performed by the official technical service. The user may only perform the manipulation indicated in this manual.

The manufacturer is not responsible for other manipulations performed by the user.

In General:

**CLEAN** → Always clean with damp cloth and a neutral soap solution. Do not use products that contain solvent or acid.

**LOCATION** → The equipment must be placed in a dry location, easily accessible, without direct sunlight, not subject to extreme temperature changes and installed on a flat and stable floor, able to withstand the weight of the equipment when full of water.

### 1.2 Preliminary inspection.

Upon delivery of the merchandise, check the integrity of the packaging. If it is damaged, take the product out of the packaging and check visually that it has not suffered any damage during transport. If the product is damaged, inform our distributor immediately.

The product is delivered in cardboard packaging. During transport and storage, protect the product from humidity, heat sources and possible mechanical damage (impact, falls, etc...). Lift and handle the product with care, using the appropriate lifting devices.

## 2. General overview

### 2.1 Introduction

The instruction are intended to ensure correct installation and optimum performance of our NBB.

The instruction and specifications below refer to the standard version. Refer to the contractual sales documentation for variations and features of the special version.

If it is necessary to request technical information or replacement parts from our customer service department, please give the exact name of the mode, together the serial number.

For instruction, situation and events which are not covered in this manual or in the sales documentation contact our nearest customer service point.

The equipment comprises a water storage tank, with a water intake controlled by a mechanical valve. This water usually comes from the public drinking water supply.

A domestic water installation classified the tank water as category 2.

Classification of the difference categories of stored water, as per EN 1717:

**Category 1:** Water destined for human consumption, coming directly from a drinking water distribution network.

**Category 2:** Fluid that does not represent any risk to human health. Fluid recognized as valid for human consumption, in particular water taken from a drinking water system that may be impaired in term of taste, odour, colour and temperature.

**Category 3:** Fluid that represent a certain risk to human health due to the presence of one or more harmful substances.

**Category 4:** Fluid that represents a certain risk to human health due to the presence of one or more toxic or very toxic substances, or one or more radioactive, mutagenic or cancerous substances.

**Category 5:** Fluid that represents a risk to human health due to the presence of microbiological or viral system.

## 2.2 Technical features

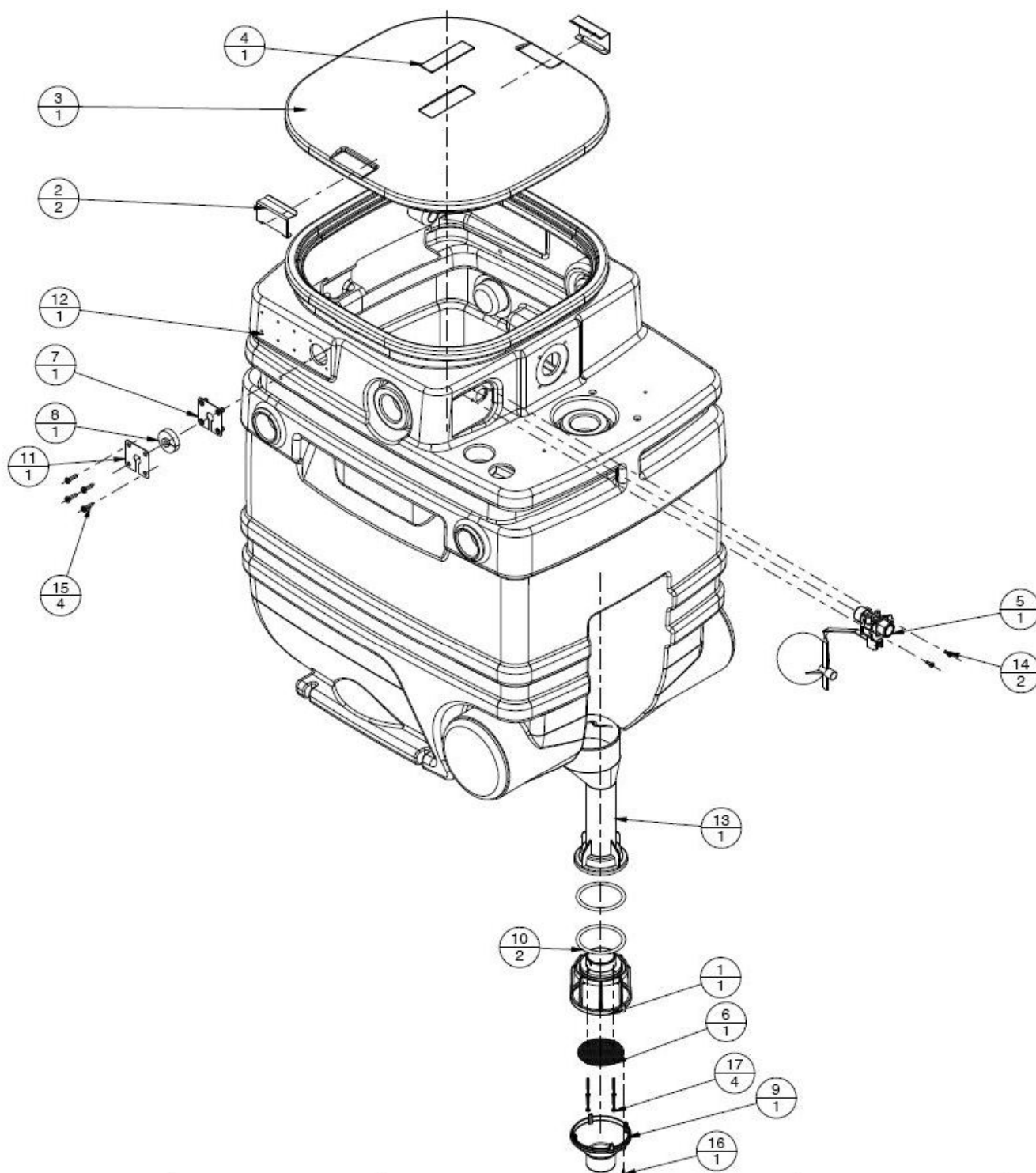


The NBB device can supply water to a maximum of two homes at once.

The tank incorporates an overflowoutlet, to prevent possible contamination of drinking water from the public network in the event of backflow, in compliance with European regulation EN1717 "Protection against contamination of drinking water installation and general requisites for devices to avoid contamination by reflux". AB type protection is provided, allowing us to use the equipment in installation with fluids up to category 5.

The equipment also incorporates a drainage connection system with air vent, as for the requirements of regulation EN1717.

## 2.3 Main components



### Legend:

- 1) OVERFLOWING BASKET TANK 280 LT
- 2) CLIP COVER TANK
- 3) COVER NBB TANK WRAS
- 4) NBB LABEL
- 5) RWS FLOAT WITH FLANGE WRAS
- 6) FILTER
- 7) Group Internal gland plate
- 8) Seal gland plate 42x6
- 9) FUNNEL OVERFLOW TANK LT 280

- 10) O-RING 74X5.70 NBR70 WRAS
- 11) Inner gland plate
- 12) DRILLED TANK NBB
- 13) Overflowing OVERFLOW TANK TUBE LT 280
- 14) CPC SCREW M4 X 12 UNI 7687 INOX A2
- 15) CPC SCREW M5 X20 UNI 7687 304
- 16) SCREW TC + PH D3.5X12 INOX A2 TRU
- 17) SCREW TC + PH D4.2X38 INOX A2 TRU



### **3. Installation**

Installation operation must be carried out solely by expert qualified personnel. Use adequate equipment and protection. Comply with regulations for accidental prevention. Lift and manipulate the product with care, using the appropriate lifting devices.

If the product shows obvious signs of damage do not perform the installation and consult the customer service department.

#### **3.1 Hydraulic installation**

Place the equipment on a horizontal floor, strong enough to support the weight of the equipment when full of water.

Ensure sufficient space for installation and maintenance around and above the NBB.

The NBB must be connected to the installation using flexible joints, to avoid excessive force on the system.

The installation of a filter at the intake is also recommended to avoid the intake mechanical valve becoming obstructed by debris.

### **4. Start up and operation**

To start work with this system you need to complete the system with the kit and pumps supply separately. For more information, please contact, our customer service.

### **5. Repair and maintenance**

#### **5.1 Maintenance**

Manipulations or repair must only be performed by the official technical service. The user may only perform the manipulation indicated in this manual.

The manufacturer is not responsible for other manipulations performed by the user.

### **6. Possible problem, causes and solution**

If you have problem with inlet float switch, remove and clean the internal filter.

To arrive to internal filter, remove the flexible pipe from public water network and inside the diameter you find a filter. With tool remove the filter and clean.

### **7. Transport and storage**

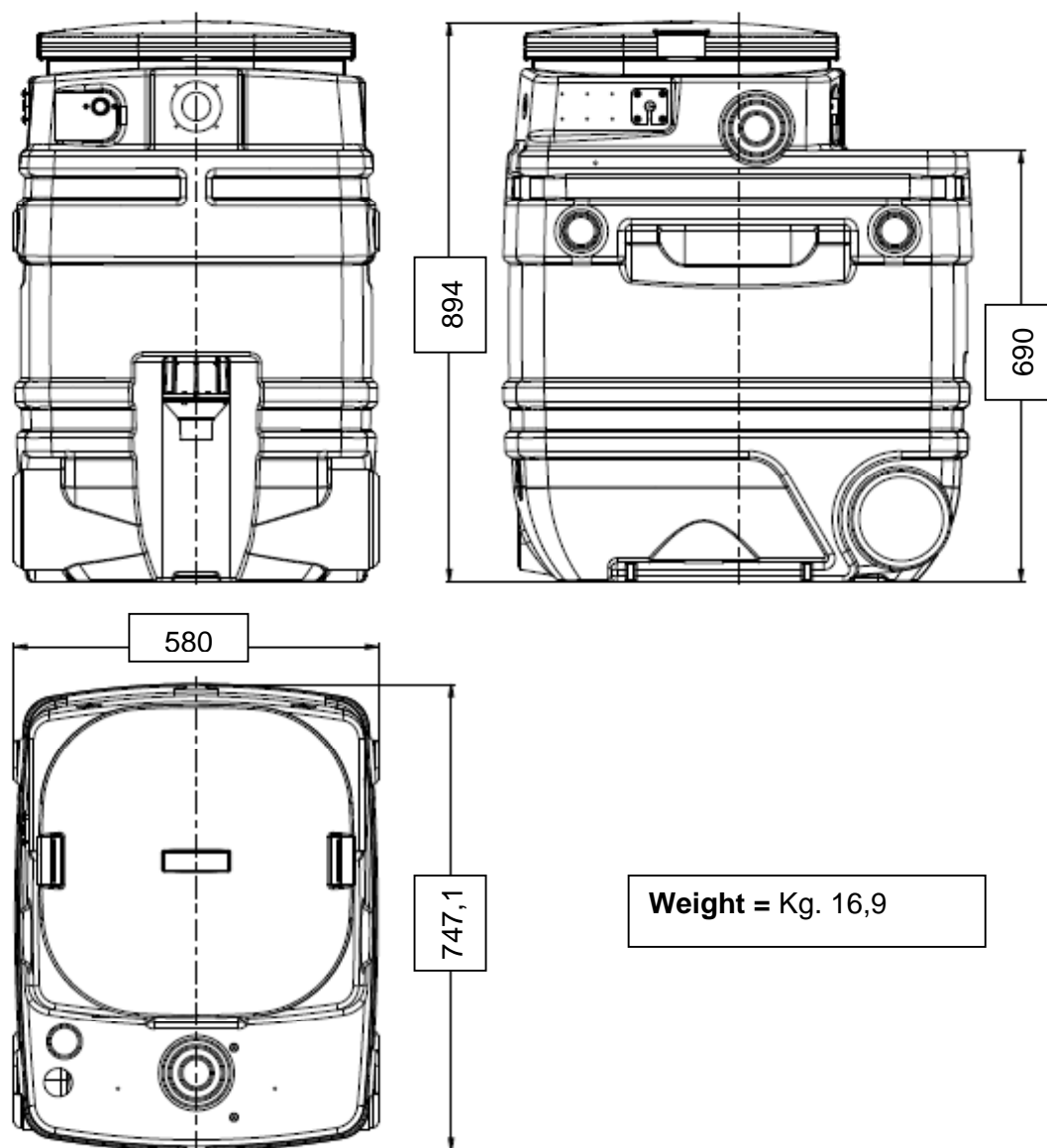
The NBB arrive correctly packaged for transport on pallets. Do not unpack the system until it arrive at the final location.

### **8. Disposal**

After the installation, dispose of the packaging according to the applicable laws and if is possible, recycle.

When the system must be disposed of, it does not contain any toxic or contaminating material.

## 9. Dimension and weight





---

**DAB PUMPS LTD.**

Unit 4, Stortford Hall Industrial  
Park Dunmow Road, Bishops Stortford, Herts  
CM23 5GZ - UK  
Tel. +44 1279 652 776  
Fax +44 1279 657 727

**DAB PUMPS B.V.**

Albert Einsteinweg, 4  
5151 DL Drunen - Nederland  
Tel. +31 416 387280  
Fax +31 416 387299  
info.nl@dabpumps.com

**DAB PUMPS B.V.**

Brusselstraat 150  
B-1702 Groot-Bijgaarden - Belgium  
Tel. +32 2 4668353  
Fax +32 2 4669218

**DAB PUMPEN DEUTSCHLAND GmbH**

Tackweg 11  
D - 47918 Tönisvorst - Germany  
Tel. +49 2151 82136-0  
Fax +49 2151 82136-36

**PUMPS AMERICA, INC. DAB PUMPS DIVISION**

3226 Benchmark Drive  
Ladson, SC 29456 USA  
Ph. 1-843-824-6332  
Toll Free 1-866-896-4DAB (4322)  
Fax 1-843-797-3366

**DAB PUMPS IBERICA S.L.**

Parque Empresarial San Fernando  
Edificio Italia Planta 1ª  
28830 - San Fernando De Henares - Madrid  
Spain  
Ph. +34 91 6569545  
Fax +34 91 6569676

**000 DWT GROUP**

100 bldg. 3 Dmitrovskoe highway,  
127247 Moscow - Russia  
Tel. +7 095 485-1679

**DAB PUMPS CHINA**

Shandong Sheng Qingdao Shi  
Jinji Jishu Kaifaqu Kaituo Rd  
ZIP PC266510  
CN - China  
tel. +8613608963089  
fax. +8653286812210

**DAB PUMPS S.p.A.**

Via M. Polo, 14 - 35035 Mestrino (PD) - Italy  
Tel. +39 049 9048811 - Fax +39 049 9048847  
[www.dabpumps.com](http://www.dabpumps.com)

**DWT HOLDING S.p.A.**

Sede Legale / Headquarter:  
Via Marco Polo, 14 | 35035 Mestrino | Padova | Italy  
[www.dwtgroup.com](http://www.dwtgroup.com)

07/10 cod.60140014